

## TECTUM Acousti-Tough Ceiling System

The Tectum Acousti-Tough Ceiling System™ is a suspended acoustical ceiling specifically designed for multi-purpose rooms and gymnasiums. Tectum panels are the only hard surfaced, durable panels that can take repeated blows from basketballs, volleyballs and soccer balls without cracking or breaking.

The Tectum Keep Clip, an integral part of the Acousti-Tough Ceiling System, holds the Tectum Ceiling Panels in place and helps reposition them after being struck, saving maintenance time and money in high ceiling areas. It is simple to install and permits full access to the plenum. Two sizes are available to accommodate panels from one inch to two inches thick. Panels must be square-edged, lay-in for this application. Aesthetics are not affected because the clip is invisible from below.

The Acousti-Tough Ceiling System is appropriate in a wide variety of abuse-prone applications:

- Recreational facilities—to prevent stray balls from dislodging/ breaking ceiling panels.
- Exterior applications—shopping centers, canopies, soffits, tunnels, parking ramps.
- Unsupervised corridors, locker rooms, garages and other areas to minimize maintenance.

### EXPOSED GRID

All manufacturers must be minimum intermediate duty grid, 1 1/2" height main runners and cross tees.

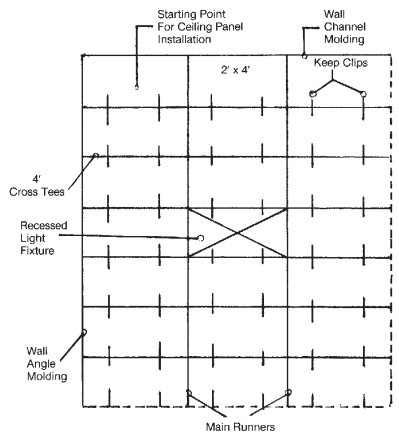


Figure 1, 2' x 4' Grid

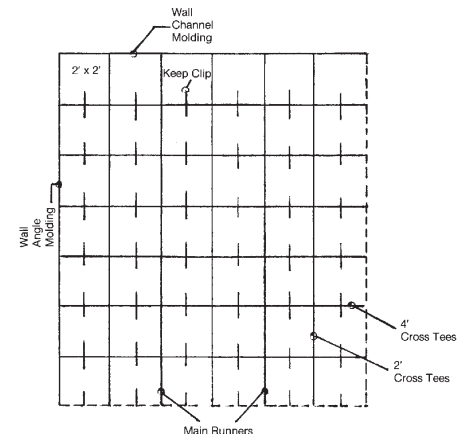
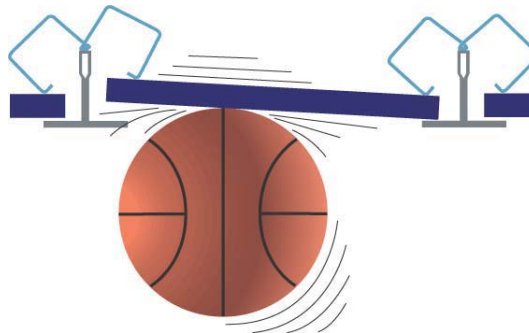


Figure 2, 2' x 2' Grid



P.O. Box 3002  
Newark, OH 43058

**TECTUM<sup>INC</sup>**  
The Noise Control Solution

105 S. 6th St.  
Newark, OH 43055

## TECTUM ACOUSTICAL PERFORMANCE

### TECTUM CLOUDS

#### SOUND ABSORPTION COEFFICIENTS

Panel Type	125	250	500	1000	2000	4000	NRC	Mounting
1" x 24" x 24" Lay-In	.40	.43	.35	.48	.60	.93	.45	E-400
1½" x 24" x 24" Lay-In	.44	.43	.33	.49	.66	.77	.50	E-400
2" x 24" x 24" Lay-In	.48	.46	.36	.55	.74	.79	.55	E-400

### TECTUM PRODUCT

Panel Type	Nominal Thickness (inches)	Actual Size (inches)	Edge Detail	Factory Finish	Light Reflectance	Flame Spread	Weight LBS/SF		
							1"	1½"	2"
Acousti-Tough Ceiling System	1, 1½, 2	23¾ x 23¾, 23¾ x 47¾	Square	White, Natural, Custom Colors	.75 / .60	0 - 25	1.63	2.53	3.3

### ENVIRONMENTAL STATEMENT

Tectum panels are made from sustainable domestic, renewable raw materials. The wood excelsior is harvested from new forest growth that reaches maturity in 25-30 years. Tectum Inc. only purchases excelsior from companies that are part of the Sustainable Forestry Initiatives (SFI) Program. This program is a comprehensive system of objectives and performance measures that integrates the perpetual growing and harvesting of trees with the protection of wildlife, plants, soil, and water quality.

The primary source of magnesium oxide used in the binder is seawater. The silicate used is made from sand. Tectum Inc. recovers waste magnesium and recycles water during the manufacturing process. The recovered magnesium waste is used in the manufacturing of magnesium sulfate, a primary ingredient in the binder.

These recovery programs have been successful in reducing the water consumed and in reducing the magnesium requirement for the manufacture of magnesium sulfate.

Tectum products continue to meet the needs of owners, architects, and engineers that require "green" building products.

#### TECTUM PRODUCTS AND LEED

The Leadership in Energy and Environmental Design (LEED®) Green Building Rating System represents the U.S. Green Building Council's effort to provide a national standard for what constitutes a "green building." Through its use as a design guideline and third-party certification tool, it aims to improve occupant well-being, environmental performance and economic returns of buildings using established and innovative practices, standards and technologies.

The LEED building rating system has been established to evaluate every aspect of the construction process and building components used in new and existing buildings. While the main emphasis is on energy efficiency, conservation and the overall "health" of the building, the use of "green" products contributes favorably to the overall rating of a building.

Six rating categories make up the project checklist. Four of the six categories are not applicable to Tectum products. Categories four and five, Materials and Resources and Indoor Environmental Quality, consist of 10 elements applicable to the use of Tectum products. Tectum products contribute favorably in all ten areas to the overall positive rating of the building. For more information, see Marketing Bulletin M-81, available on our website.

Tectum is proud to have its products listed in the GreenSpec Directory\*\* published by Building Green from the editors of Environmental Building News. Tectum Roof Deck is noted on page 69, section 3511 and Tectum Interior products are listed on page 230, section 9512.