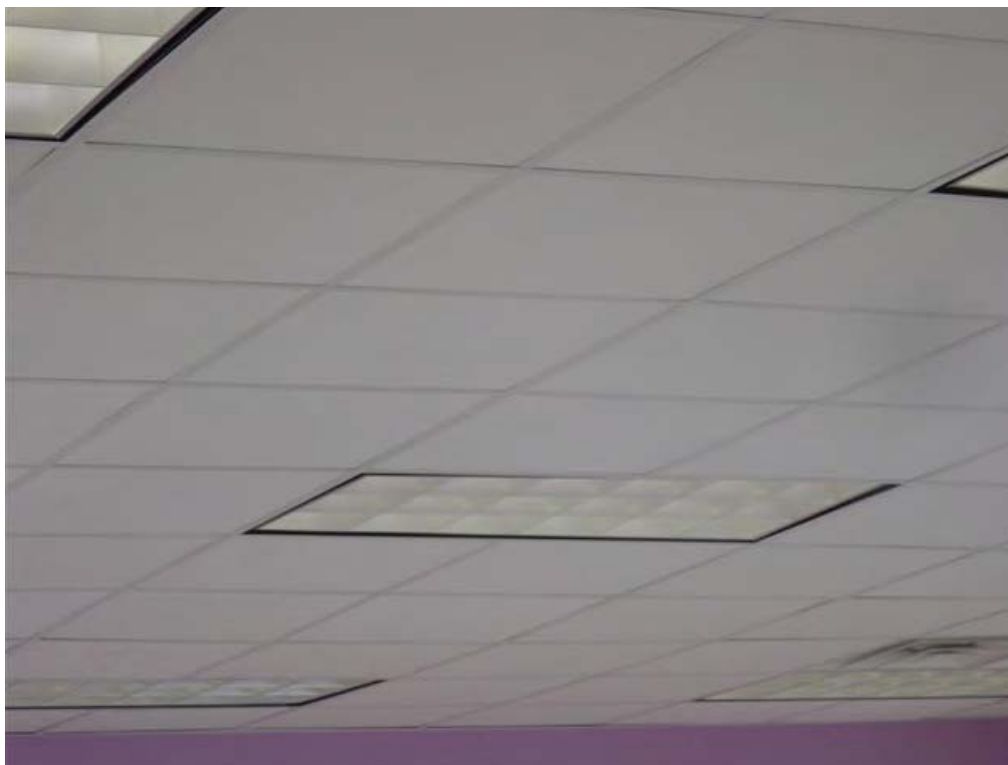


TECTUM VARIATIONS LAY-IN CEILING PANELS

A new "variation" of a familiar and trusted product, Tectum Variations is a Tectum Lay-In Ceiling Panel with a thin fiberglass veil laminated to the face of the panel. The panel is then factory painted white or Sherwin Williams™ custom colors as selected by the architect. The end result is a smooth, attractive panel that will compliment any design where high end finishes are specified, while maintaining the outstanding abuse resistance Tectum panels have provided for years.

The non-gloss surface gives the panel an exclusive and true plaster like look. The facer allows sound waves that are not absorbed by the veil to pass through and be absorbed by the base board. The veil does enhance the acoustical performance of one inch Tectum product.



™ Registered trademark of The Sherwin Williams Company

P.O. Box 3002
NEWARK, OH 43058

TECTUM_{INC.}
The Noise Control Solution

105 S. 6TH ST.
NEWARK, OH 43055

TECTUM ACOUSTICAL PERFORMANCE

TECTUM VARIATIONS LAY-IN CEILING TILE

SOUND ABSORPTION COEFFICIENTS

Panel Type	125	250	500	1000	2000	4000	NRC	Mounting
1" VARIATIONS (LAY-IN)	.47	.53	.35	.50	.68	.86	.50	E-400
1" Variations (Lay-In) w/ 6 1/4" Fiberglass Backing	1.01	.89	1.06	.97	.93	1.13	.95	E-400

TECTUM PRODUCT

Panel Type	Nominal Thickness (Inches)	Actual Size (Inches)	Edge Detail	Factory Finish	Light Reflectance	Flame Spread	Weight LBS/SF		
Variations Lay-In Ceiling Panel	1	23 ³ / ₄ x 23 ³ / ₄ , 23 ³ / ₄ x 48 30 x 30, 30 x 60 Custom Lengths Available	Square	Painted white or custom colors	.75	5	1"	1 ¹ / ₂ "	2"
Variations Lay-In Ceiling Panel	1 ¹ / ₂ , 2	23 ³ / ₄ x 23 ³ / ₄ , 23 ³ / ₄ x 48 48 x 48, 30 x 30 30 x 60 Custom Lengths Available	Square	Painted white or custom colors	.75	5		2.70	3.60

ENVIRONMENTAL STATEMENT

Tectum panels are made from sustainable domestic, renewable raw materials. The wood excelsior is harvested from new forest growth that reaches maturity in 25-30 years. Tectum Inc. only purchases excelsior from companies that are part of the Sustainable Forestry Initiatives (SFI) Program. This program is a comprehensive system of objectives and performance measures that integrates the perpetual growing and harvesting of trees with the protection of wildlife, plants, soil, and water quality.

The primary source of magnesium oxide used in the binder is seawater. The silicate used is made from sand. Tectum Inc. recovers waste magnesium and recycles water during the manufacturing process. The recovered magnesium waste is used in the manufacturing of magnesium sulfate, a primary ingredient in the binder.

These recovery programs have been successful in reducing the water consumed and in reducing the magnesium requirement for the manufacture of magnesium sulfate.

Tectum products continue to meet the needs of owners, architects, and engineers that require "green" building products.

TECTUM PRODUCTS AND LEED

The Leadership in Energy and Environmental Design (LEED*) Green Building Rating System represents the U.S. Green Building Council's effort to provide a national standard for what constitutes a "green building." Through its use as a design guideline and third-party certification tool, it aims to improve occupant well-being, environmental performance and economic returns of buildings using established and innovative practices, standards and technologies.

The LEED building rating system has been established to evaluate and every aspect of the construction process and building components used in new and existing buildings. While the main emphasis is on energy efficiency, conservation and the overall "health" of the building, the use of "green" products contributes favorably to the overall rating of a building.

Six rating categories make up the project checklist. Four of the six categories are not applicable to Tectum products. Categories four and five, Materials and Resources and Indoor Environmental Quality, consist of 10 elements applicable to the use of Tectum products. Tectum products contribute favorably in all ten areas to the overall positive rating of the building. For more information, see Marketing Bulletin M-81, available on our website.

Tectum is proud to have its products listed in the GreenSpec Directory** published by Building Green from the editors of Environmental Building News. Tectum Roof Deck is noted on page 69, section 3511 and Tectum Interior products are listed on page 230, section 9512.